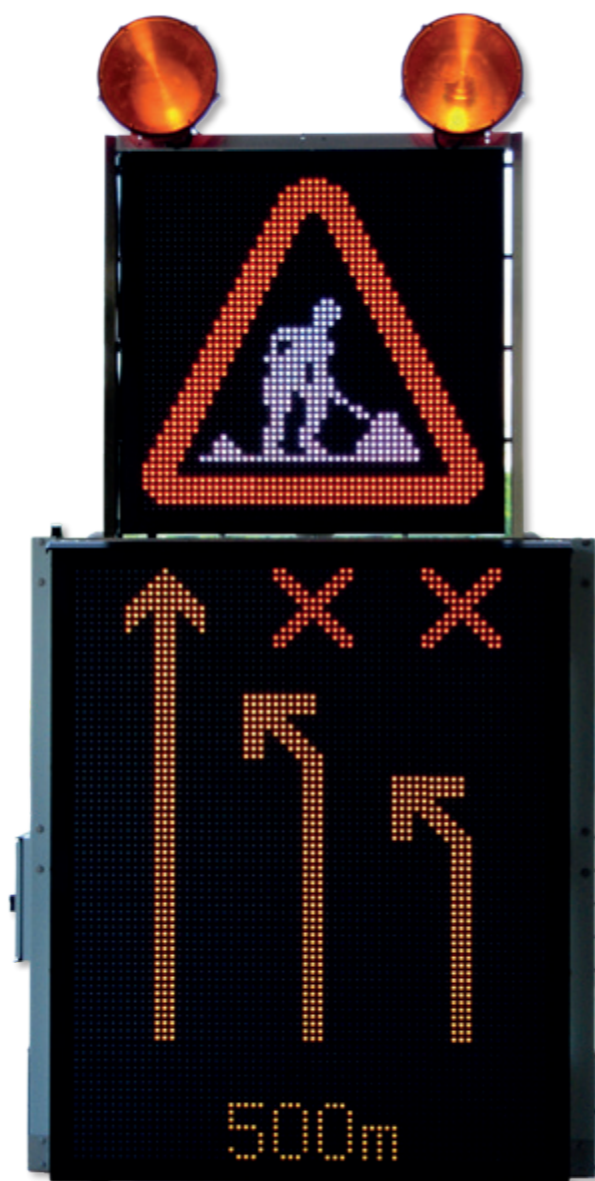


LED VMS Standard Fix



Technical Details

Technical details LED VMS Trailer

Weight	approx. 500 kg
Dimension retracted (L x W x H)	approx. 1618 x 1882 x 806 mm
Dimension extended (L x W x H)	approx. 1618 x 2982 x 806 mm
Frame	Galvanized steel
Battery charger	30A
Batteries	2 pcs. 12V/ 230 AH
Lifting/ Lowering (vertical)	Hydraulic
Operation Voltage	12V

Control Unit

Control unit 1	Radio remote control with feedback signal (Optional)
Control unit 2	Controller installed on the trailer (Backup)
Control unit 3	G.T.M.S - Global Traffic Management System (Optional)

Technical details Warning Lamps

Warning lamps	2 pcs. LED warning lamps
Approval LED-lamps	Compliant to EN-12352, Cl. L9M

Technical details Upper LED Message Board

Dimensions (WxH)	960 x 960 mm
Resolution	48 x 48 px
Pixel pitch	20 mm

Technical details Lower LED Message Board

Dimensions (WxH)	1280 x 1600 mm
Resolution	64 x 80 px
Pixel pitch	20 mm

Technical details LED Message Boards

LED colors	RGB Fullcolor
Programming	Freely programmable
Image design	Paint or LED-Image Tool (*.bmp)
Night dimming	Automatic
Temperature range	from -20°C to +60°C
Protection level	IP 54
Approvals	Optical performance in compliance with EN-12966

Optional Accessories

LED beacon
G.T.M.S. - Global Traffic Management System

